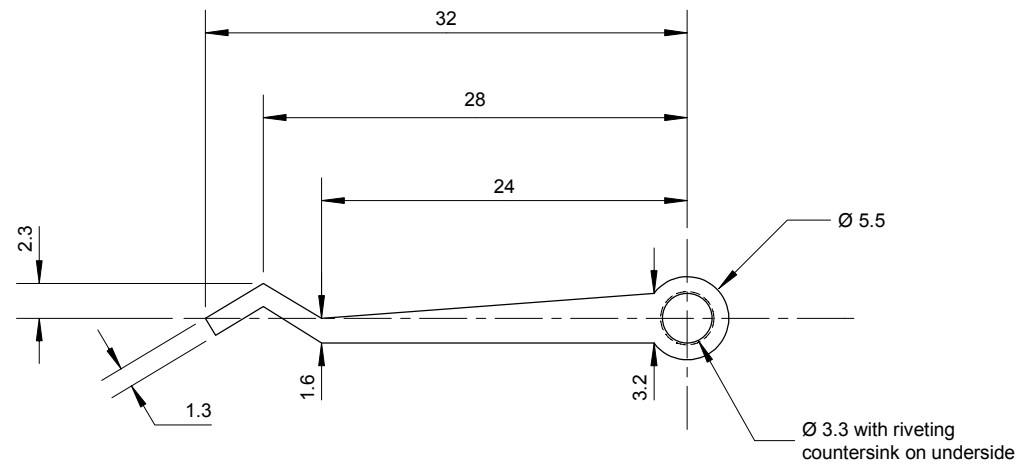


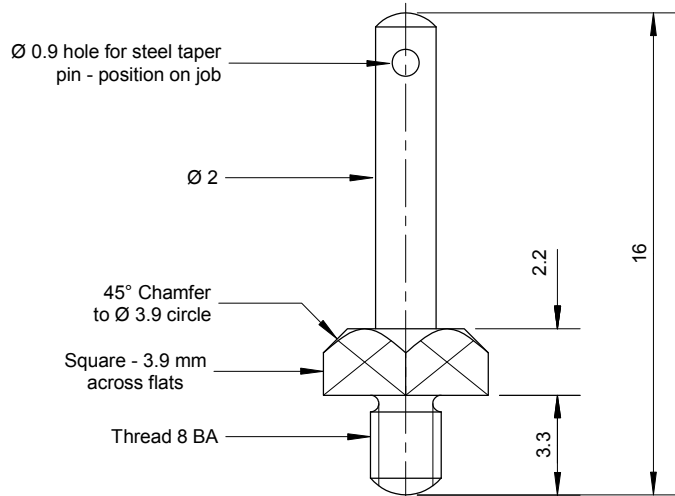
COLLET - Brass, polished

Scale 4:1



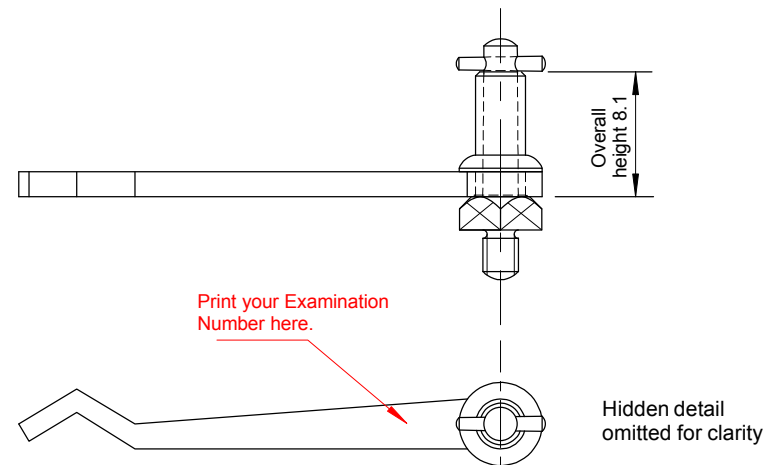
JUMPER - Steel, polished, 1.5mm thick

Scale 2:1



POST - Steel, polished & blued

Scale 4:1



GENERAL ARRANGEMENT

Scale 2:1

**CARRIAGE CLOCK: JUMPER,
COLLET & POST ASSEMBLY**

MATERIALS: AS STATED

FINISH: AS STATED

ALL DIMENSIONS IN mm. (Do not scale)

TOLERANCE: ± 0.1 mm

**Certificate in Clock and Watch Servicing - Unit 2
Technician Grade - Practical Workshop Processes**

November 2006



British Horological Institute

UNSTATED DIMENSIONS AND
WORKING CLEARANCES ARE LEFT
TO THE CANDIDATE'S DISCRETION

FIRST ANGLE PROJECTION

**FINISHED COMPONENTS TO BE
SUBMITTED TO UPTON HALL BY
1st DECEMBER 2006**

N 06 Tech F